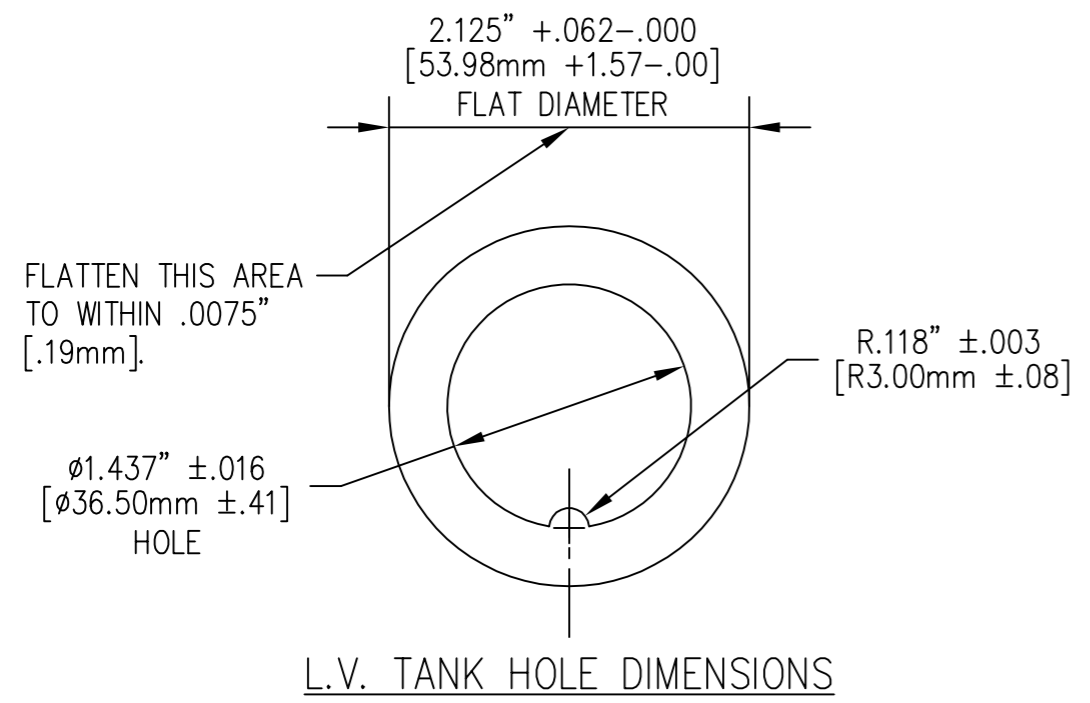
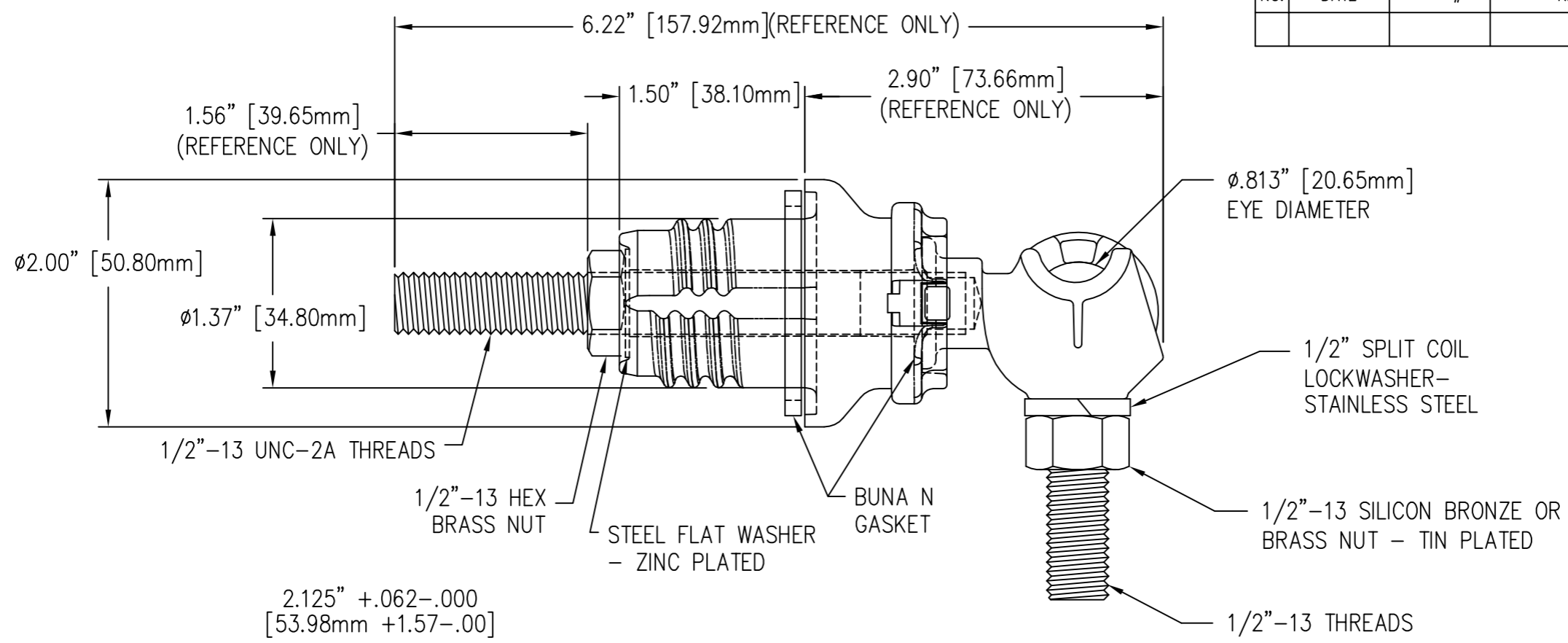


| REVISIONS | | | | | |
|-----------|------|-------|---------|----|-------|
| NO. | DATE | ECN # | REMARKS | BY | APPD. |
| | | | | | |



MATERIAL:
 STUD - COPPER CDA 11000
 BODY - CDA 84400 TIN PLATED
 EYEBOLT - CDA 95500 TIN PLATED

| | | | |
|---|--------------|--|------------|
| TOLERANCES (EXCEPT AS NOTED) DECIMAL ± .032" / .8mm FRACTIONAL ± ANGULAR ± 2° | | H-J ENTERPRISES, INC. 3010 HIGH RIDGE BLVD. HIGH RIDGE, MO. 63049 USA PHONE 1-636-677-3421 FAX 1-636-376-1915 | |
| | | 50 KVA L.V. BUSHING ASSEMBLY NON-PORCELAIN INSULATOR | |
| | | MATERIAL (SEE ABOVE) | |
| | | CHK'D | APP'D |
| DRAWN BY CJT | DATE 7-21-08 | SCALE N.T.S. | AS1583-001 |